

THROUGH SECTION

90° BEND

'T' SECTION

TYPICAL PLAN SECTIONS

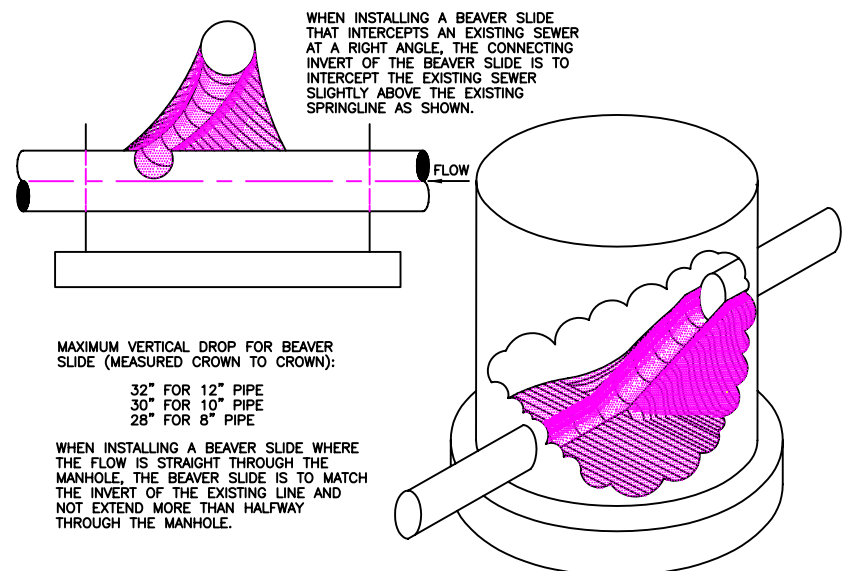
CONCRETE BASE MAY BE: 64" DIAMETER FOR 48" MANHOLES; 92" DIAMETER FOR 72" MANHOLES.

SECTION	MANHOLE SIZE	
	48"	72"
FLAT BASE	0.39 SQ IN/FT EACH WAY	0.39 SQ IN/FT EACH WAY
RISER SECTION*	0.12 SQ IN/FT	0.18 SQ IN/FT
CONE SECTION*	0.12 SQ IN/FT	-----
ADJUSTING RING	0.024 SQ IN	0.024 SQ IN

*CIRCUMFERENTIAL REINFORCING ALL AREAS ARE MINIMUM CROSS-SECTIONAL AREA OF REINFORCEMENT PER FOOT OF SECTION.

MANHOLE REINFORCEMENT SCHEDULE

(SHALL COMPLY WITH AASHTO M-199-ASTM 478)



WHEN INSTALLING A BEAVER SLIDE THAT INTERCEPTS AN EXISTING SEWER AT A RIGHT ANGLE, THE CONNECTING INVERT OF THE BEAVER SLIDE IS TO INTERCEPT THE EXISTING SEWER SLIGHTLY ABOVE THE EXISTING SPRINGLINE AS SHOWN.

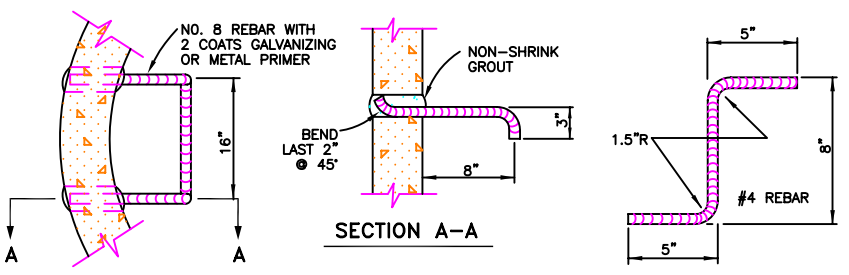
MAXIMUM VERTICAL DROP FOR BEAVER SLIDE (MEASURED CROWN TO CROWN):

- 32" FOR 12" PIPE
- 30" FOR 10" PIPE
- 28" FOR 8" PIPE

WHEN INSTALLING A BEAVER SLIDE WHERE THE FLOW IS STRAIGHT THROUGH THE MANHOLE, THE BEAVER SLIDE IS TO MATCH THE INVERT OF THE EXISTING LINE AND NOT EXTEND MORE THAN HALFWAY THROUGH THE MANHOLE.

TYPICAL BEAVER SLIDES

NOT TO SCALE

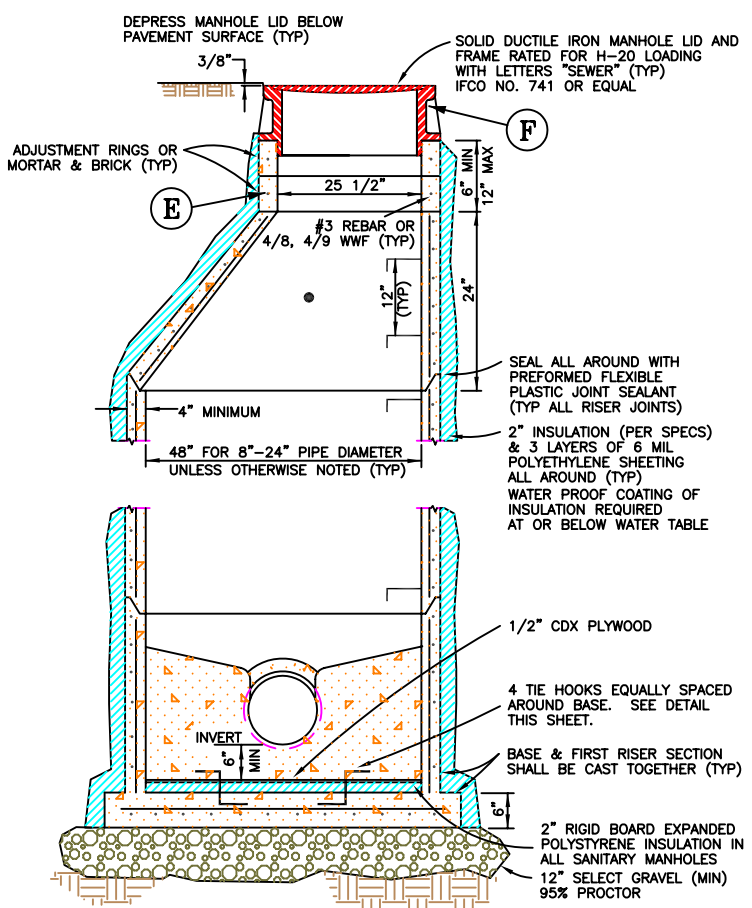


MANHOLE STEP

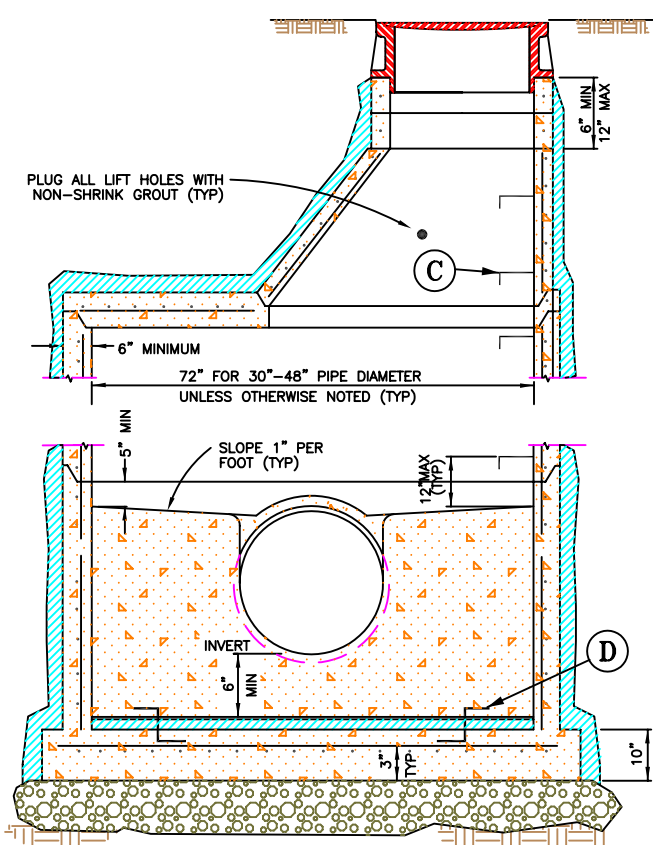
NOT TO SCALE

TIE HOOK

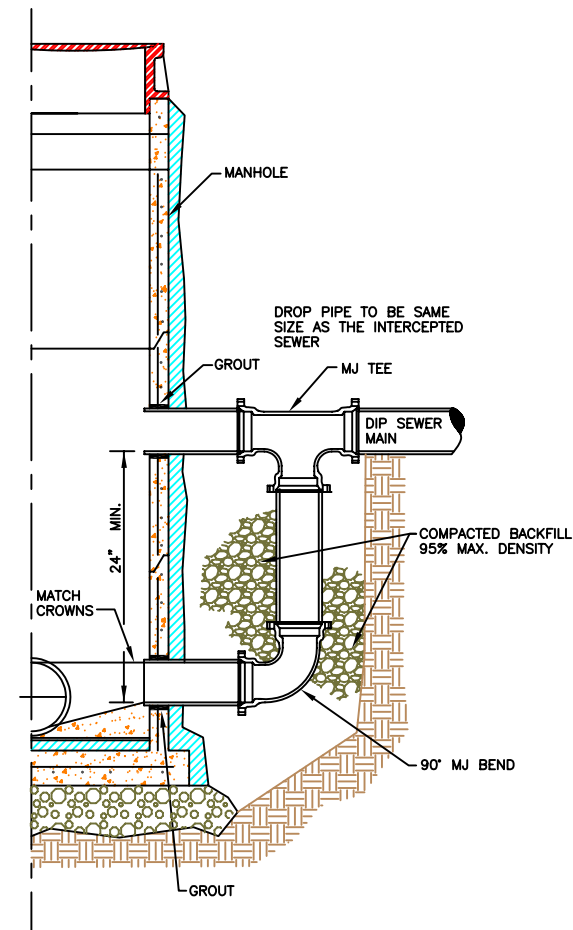
NOT TO SCALE



48" TYPE I

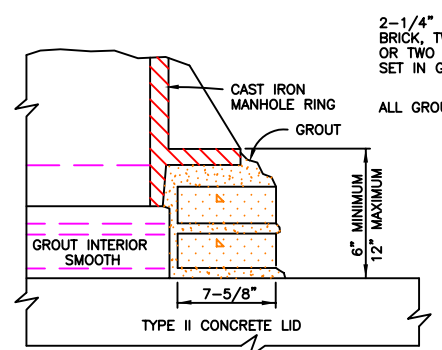


72" TYPE I



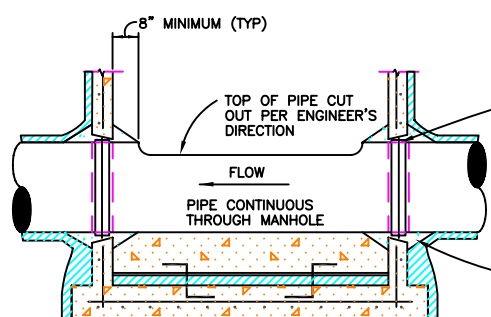
DROP CONNECTION MANHOLE DETAIL

NOTE: DROP MANHOLES TO BE USED WHEN INCOMING LINE INVERT IS GREATER THAN 24" ABOVE MANHOLE INVERT

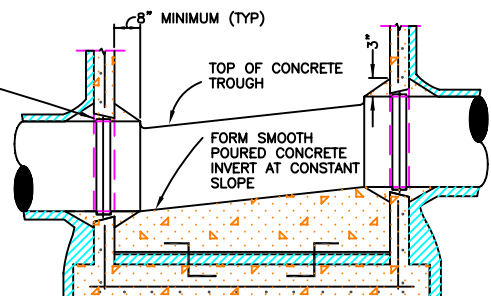


GROUT AND CONCRETE BRICK ALTERNATIVE

NOT TO SCALE



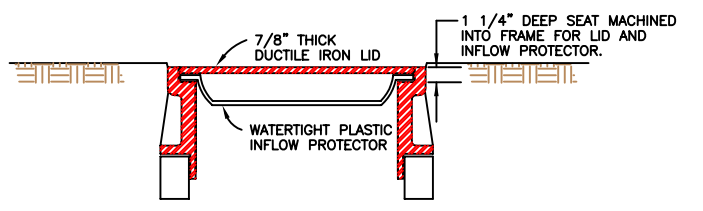
TYPICAL THROUGH SECTION



TYPICAL DROP SECTION

TYPICAL MANHOLES

NOT TO SCALE



LID, FRAME & MANHOLE INSERT

NOT TO SCALE

DATE	REVISION	BY
2/28/07	DROP MH	MJB
7/22/98		

PLAN SCALE: NOT TO SCALE

PLOT SCALE: 1=1

DESIGNED	APPROVED
DRAWN NBB	USA ENGINEER
CHECKED MJB	
DATE FEB 98	FILE: STANDARD DETAILS SS1



SANITARY SEWER SYSTEM
MANHOLES

SS1